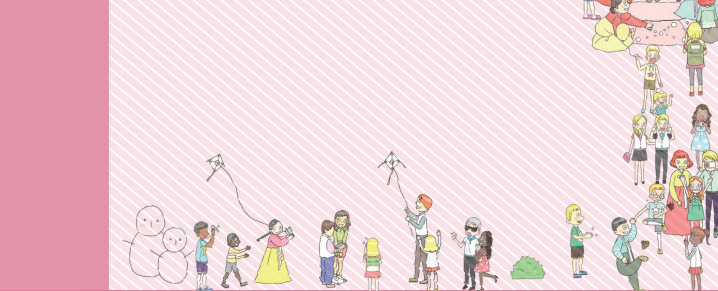


# 09 Enjoy Jeollabuk-do

The most attractive Korea, Jeonbuk! It is full of cultural assets such as the the most "Korean" Hanok Village as well as Pansori, known as the source of Hallyu and excellent food.



# 10 Festivals



Festival City/District	축제이름	2016년 기준	홈페이지
Jeonju	Jeonju Night 2016	2016.09.30~2016.10.01	www.jeonju-night.kr
	Jeonju International Sori Festival	2016.09.29~2016.10.03	www.sorifestival.com
	Jeonju Bibimbap Festival	2016.10.20~2016.10.23	www.bibimbapfest.com
Gunsan	Gunsan Time Travel Festival	2016.09.30~2016.10.02	http://festival.gunsan.go.kr
	Gunsan-Seochon Geum River Migratory Tour	2016.11.18~2016.11.20	http://gmbo.gunsan.go.kr
	Gubulgi Time Travel Festival	2016.09.30~2016.10.02	www.gubulgi.com
Iksan	Iksan Gukhwa Festival	2016.10.28~2016.11.06	www.iksan.go.kr/gukhwa/
Jeongeup	Jeongeup Guljucho Festival	2016.10.01~2016.10.09	http://guljucho.jeongeup.go.kr
	Jeongeupsa Culture Festival	2016.10.28~2016.10.30	www.jchf.or.kr
Namwon	Namwon Chunhyangje	2016.10.07~2016.10.09	www.heungbu.or.kr
Gimje	Gimje Horizon Festival	2016.09.29~2016.10.03	http://festival.gimje.go.kr
Wanju	Wanju Wild Food Festival	2016.09.23~2016.09.25	www.wildfoodfestival.kr
Jinan	Jinan Red Ginseng Festival	2016.10.12~2016.10.16	www.jinainfestival.com
Muju	Muju Film Festival	2016.06.02~2016.06.06	www.mjff.or.kr
	Muju Firefly Festival	2016.08.27~2016.09.04	www.firefly.or.kr
Jangsu	Jangsu Hanworang Apple Festival	2016.09.02~2016.09.04	www.jangsufestival.com
Imsil	Imsil N Cheese Festival	2016.10.06~2016.10.09	www.imsilfestival.com
Sunchang	Soonchang Jang Festival	2016.10.13~2016.10.16	www.jangfestival.co.kr
Gochang	Gochang Spring Festival	2016.09.10~2016.09.25	www.borinara.co.kr
	Seonunsa Temple Culture Festival	2016.09.24~2016.09.24	www.seonunsa.org
	Gochang Moyang Festival	2016.10.05~2016.10.09	www.gochang.go.kr/ moyangfestival
Buan	Buan Masil Festival	2016.05.06~2016.05.07	www.buanmasil.com

# 11 Transportation



Division	Address	Trave Route	Fare (KRW)	Duration
Jeonju Station	680 Dongbudaek-ro, Deokjin-gu, Jeonju-si, Jeollabuk-do, Republic of Korea	Jeonju - Yongsan	KTX ₩32,000	1 : 30
			Saemaul ₩26,200	3 : 10
			Mugung hwa ₩17,600	3 : 20
Gunsan Station, Janghang Line	455 Naeheung-dong, Gunsan-si, Jeollabuk-do, Republic of Korea	Gunsan - Yongsan	Saemaul ₩21,700	3 : 01
			Mugung hwa ₩14,600	3 : 20
			KTX ₩32,000	1 : 15
Iksan Station	153 Iksandae-ro, Iksan-si, Jeollabuk-do, Republic of Korea	Iksan - Yongsan	Saemaul ₩23,800	3 : 21
			Mugung hwa ₩16,000	3 : 01
			KTX ₩39,500	1 : 30
Jeongeup Station, Honam Line	305 West Industrial Road, Jeongeup-si, Jeollabuk-do, Republic of Korea	Jeongeup - Yongsan	Saemaul ₩27,900	3 : 17
			Mugung hwa ₩18,800	3 : 35
			KTX ₩39,200	2 : 00
Namwon Station	71, Gyeoryong-ro, Namwon-si	Namwon - Yongsan	Saemaul ₩31,400	3 : 37
			Mugung hwa ₩21,100	4 : 00
			KTX ₩39,200	2 : 00
Gimje Station, Honam Line	198 Duwol-ro, Gimje-si, Jeollabuk-do, Republic of Korea	Gimje - Yongsan	Saemaul ₩25,400	3 : 00
			Mugung hwa ₩17,100	3 : 17
			KTX ₩39,200	2 : 00
Samnye Station, Jeolla Line	85-32 Samnye Station-ro, Wanju-gun, Jeollabuk-do, Republic of Korea	Samnye - Yongsan	Saemaul 16,800원	3 : 10
Imsil Station, Jeolla Line	2932, Chunhyang-ro, Imsil-eup, Imsil-gun, Jeollabuk-do, Republic of Korea	Imsil - Yongsan	Mugung hwa 19,400원	3 : 40

## 2. Plane : GunSan Airport

- Address : 2, Sandong-gil, Okseo-myeon, Gunsan-si, Jeollabuk-do
- Phone Number : 1661-2626
- Course : Gunsan-Jeju
- Time : 3:25, 14:35

## 3. Bus

- Express bus : KOBUS www.kobus.co.kr / 1544-4888
- Intercitybus : BUSTAGO www.bustago.or.kr / 1644-2992

division	Name of Terminal	Address	Phone Number
Jeonju	Jeonju Express Bus Terminal	470, Cheondong-ro, Jeonju, Deokjin-gu, Jeonju-si, Jeollabuk-do, Republic of Korea	063-277-1572
	Jeonju Intercity Bus Terminal	30, Garinae-ro, Deokjin-gu, Jeonju-si, Jeollabuk-do, Republic of Korea	1688-1745
Gunsan	Gunsan Express Bus Terminal	30 Haemang-ro, Gunsan-si, Jeollabuk-do, Republic of Korea	063-445-3824
	Gunsan Intercity Bus Terminal	18 Haemang-ro, Gunsan-si, Jeollabuk-do, Republic of Korea	1666-2747
Iksan	Iksan Public Bus Terminal	56 Iksandae-ro, Iksan-si, Jeollabuk-do, Republic of Korea	063-843-5100
Jeongeup	Jeongeup Public Intercity Bus Terminal	46-4, Yeonji 1-gil, Jeongeup-si, Jeollabuk-do, Republic of Korea	1688-6676
Namwon	Namwon Express Bus Terminal	78 Chunhyang-ro, Namwon-si, Jeollabuk-do, Republic of Korea	063-625-5391
	Namwon Public Bus Terminal	109 Yongsung-ro, Namwon-si, Jeollabuk-do, Republic of Korea	063-633-0807
Gimje	Gimje Public Bus Terminal	241 Dongseo-ro, Gimje-si, Jeollabuk-do, Republic of Korea	1688-6341
Wanju	Gosan Intercity Bus Terminal	Eupnae-ri, Gosan-myeon, Wanju-gun, Jeollabuk-do, Republic of Korea	
	Bongdong Terminal	Janggi-ri, Bongdong-eup, Jeollabuk-do, Republic of Korea	
	Samnye Public Bus Terminal	28 Donghak-ro, Samnye-eup, Wanju-gun, Jeollabuk-do, Republic of Korea	063-291-1450
Jinan	Daedunsan Public Bus Terminal	11 Daedunsan Park Street, Woonji-myeon, Wanju-gun, Jeollabuk-do, Republic of Korea	
	Jinan Intercity Bus Terminal	1120 Jinmu-ro, Jinan-eup, Jinan-gun, Jeollabuk-do, Republic of Korea	063-433-2508
Muju	Muju Public Bus Terminal	351, Hapung-ro, Muju-eup, Muju-gun, Jeollabuk-do, Republic of Korea	063-322-2245
Jangsu	Jangsu Public Bus Terminal	175 Jangcheon-ro, Jangsu-gun, Jangsu-eup, Jeollabuk-do, Republic of Korea	063-351-8889
Imsil	Imsil Intercity Bus Terminal	20 Woonu-ro, Imsil-eup, Imsil-gun, Jeollabuk-do, Republic of Korea	063-642-2114
Sunchang	Sunchang Public Bus Terminal	355 Jangnu-ro, Sunchang-eup, Sunchang-gun, Jeollabuk-do, Republic of Korea	063-653-2186
Gochang	Gochang Public Bus Terminal	191 Joongang-ro, Gochang-eup, Gochang-gun, Jeollabuk-do, Republic of Korea	063-563-3388
Buan	Buan Intercity Bus Terminal	210 Seokjeong-ro, Buan-eup, Buan-gun, Jeollabuk-do, Republic of Korea	1666-2429

## 4. AirportBus

- Airport Limousine Bus
- Address : 459-6, Garinae-ro, Deokjin-gu, Jeonju-si, Jeollabuk-do, Republic of Korea
- Phone number : 1670-5477
- Course : Jeonju-Iksan-Kimpo Airpt-Incheon Airport
- Price : □ Jeonju-Kimpo Airport 23,000 KRW-Incheon Airport 31,000 KRW □ Iksan-Kimpo Airport 23,000 KRW-Incheon Airport 30,000 KRW
- Website : www.limusine.co.kr

## — Intercity Bus

- Address : 30, Garinae-ro, Deokjin-gu, Jeonju-si, Jeollabuk-do, Republic of Korea
- Phone number : 1688-1745
- Course : Jeonju-Incheon Airport /Imsil-Incheon Airport
- Price : □ Jeonju-Incheon Airport 24,500 KRW □ Imsil-Incheon Airport 23,000 KRW
- Website : www.jbexpress.co.kr

# 12 Basic sentences

## □ Greeting

Korea	Pronunciation	English
안녕하세요?	An-nyoung-ha-seo-yo?	Hi
감사합니다.	Kam-sa-ham-ni-da	Thank you
잘 지내셨어요?	Jal ji-ne-sheo-sseo-yo?	How are you?
식사 하셨어요?	Shik-sa-ha-sheo-sseo-yo?	Have a lunch / dinner yet?
나중에 만나요!	Na-jung-eo-man-na-yo!	See you later!
안녕히 계세요	An-nyoung-hi ge-seo-yo	Good bye
안녕히 가세요	An-nyoung-hi-ga-seo-yo	

## □ At the hotel

Korea	Pronunciation	English
안녕하세요 도와드릴까요?	An-nyoung-ha-seo-yo, To-wa-du-lil-kka-yo?	Hello, Can I help you?
네, 체크인을 하려고 합니다.	Ne, Check-in-ha-reo-go-ham-ni-da	Yes, I'd like to check in, please.
예약은 했습니까?	Ye-yak-eun-hat-ssum-ni-ka?	Do you have a reservation?
감사합니다.	Kam-sa-ham-ni-da	Thank you

## □ Asking to be excused

Korea	Pronunciation	English
다시 한 번 말씀해 주세요?	Ta-si-han-beonmal-sum-hae-ju-seo-yo?	I'm sorry! Can you speak again, please!
죄송합니다.	Choe-song-ham-ni-da	Sorry(for a mistake)
천천히 말씀해 주시겠어요?	Chon-chon-hi mal-ssum-hae-ju-shi-ge-sseo-yo?	Can you speak slowly?
모르겠어요.	Mo-ru-ge-sso-yo	I don't know
적어 주세요.	Cho-go-ju-seo-yo	Write it down, please
그것 한국말로 뭐라고 해요?	Ku-geot han-gung-mal-lo-mwo-ra-go hae-yo?	What's that called in Korean?
못 알아들었어요.	Mo-na-ra-dut-kke-sso-yo	I don't understand

## □ On the street

Korea	Pronunciation	English
길을 잃어버렸어요.	Ki-rul-i-ro-bo-ryo-sso-yo	I'm lost way
좀 도와주실 수 있으니까요?	Chom to-wa-ju-shil ssu I-ssu-shin-ka-yo?	Can you help me?
(화장실/약국)이 어디예요?	(Hwa-jan-shil/yak-kuk)-i o-di-ye-yo?	Where is the (bathroom / pharmacy)?
쭉 가세요! 그 다음에 왼/오른쪽으로 가세요.	T'chuk ka-se-yo! ku-da-u-me woen / o-run tcho-gu-ro jom-ga-seo-yo	Go straight then turn left / right

## □ Korean Expression / Words

Korea	Pronunciation	English
좋아요 / 안 좋아요 / 그저 그래요.	cho-a-yo / an-jo-a-yo / ku-jo / ku-rae-yo	Good / Not good / So so
내일/오늘 / 어제	Nae-il / O-nul / O-je	Tomorrow / Today / Yesterday
괜찮아요?	kwaen-cha-na-yo?	Are you ok?
배고파요 / 목말라요.	Pae-go-oa-yo / Mong-mal-la-yo	I am hungry / Thirsty
이것, 그것/ 여기, 거기	I-got, ku-got / Yeo-gi, ko-gi	This, that / Here, there
몇시예요?	Myo-sshi-ye-yo?	What time is it?
열시예요, /열μισ 반이예요.	Yol-sshi-ye-yo / Il-gop-sshi-ba-ni-eyo	It's 10o'clock, / 07:30pm.
일,이삼,사,오,육,칠,팔,구,십	Il, i, sam, sa, o, ryuk, chil, pal, ku, ship	One,two,three,four, five,six,seven,eight, nine,ten
아파요.	A-pa-yo	I feel sick
의사가 필요해요.	Ui-sa-ga pi-ryo-hae-yo	I need a doctor

## □ Introducing yourself

Korea	Pronunciation	English
저는 000입니다.	Cho-nun 000im-ni-da	My name is 000
만나서 반갑습니다.	Man-na-so ban-gap-ssum-mi-da	Nice to meet you
어디서 오셨어요?	O-di-so o-shio-sso-yo?	Where are you from?
저는 (미국/한국)에서 왔어요.	Cho-nun (mi-guk/han-guk)-e-so-wa-sso-yo	I'm from (U,S/Korea)
어디 사세요?	O-di sa-seo-yo?	Where do you live?
저는 (미국/한국)에 살아요.	Cho-nun (mi-guk/han-guk)-eso-sa-ra-yo	I live in U,S/Korea
한국은 대단한 나라입니다.	Han-gu-gun dae-dan-han na-ra-im-ni-da	Korea is a wonderful country
저는 한국어가 좋아요.	Cho-nun han-gu-go-ga cho-a-yo	I like Korean
나이가 어떻게 되세요?	Na-i-ga o-tto-ke dwoe-seo-yo?	How old are you?
저는 (스물/서른)살이에요.	Cho-nun (su-mul/so-run)-sa-ri-e-yo	I'm (twenty, thirty) years old
직장은 어떻게 되세요?	Chik-chang-un o-tto-ke dwoe-seo-yo?	What do you do for a living?
여기가 좋으세요?	Yo-gi-ga cho-u-seo-yo?	Did you like it here?

## □ Essential vocabularies

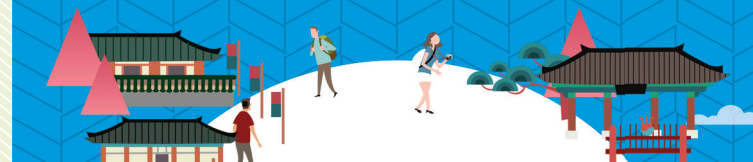
Korea	Pronunciation	English
병원	byeongwon	hospital
약국	yak-guk	drug store
경찰 / 경찰서	kyong chal / kyong chal seo	police / police station
편의점	phyong-uijeom	Convenience store
자전거	ja-jeon-geo	bike
오토바이	o-to-ba-i	motorbike
공공기관	gong-gong-gi-gwan	government office
마트	ma-thu	mart
백화점	baek-hwa-jeom	department store
택시	taek-si	taxi
버스	beo-su	bus
음식점	eum-sik-jeom	small restaurant
식당	sik-dang	restaurant



**JBCIA** 전라북도국제교류센터  
Jeollabuk-do Center for International Affairs

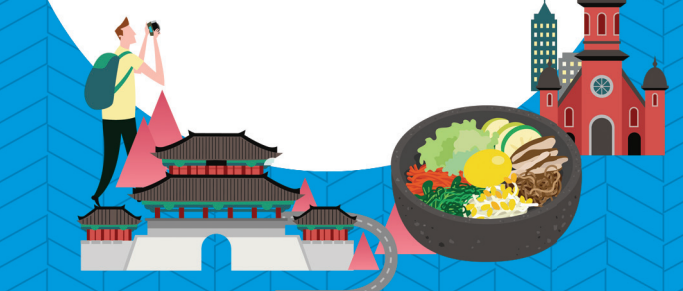
(54843)164, Palgwajeong-ro, Deokjin-gu, Jeonju-si, Jeollabuk-do  
Jeollabukdo Business Agency main 1F  
T. 063) 214-5604 F. 063) 214-5608

Homepage [www.jbcia.or.kr](http://www.jbcia.or.kr)



Life Guide for the Aliens

# Jeonbuk Life Guide Book



전라북도 JBCIA 전라북도국제교류센터  
Jeollabuk-do Center for International Affairs



# 01 Introducing Jeollabuk-do



## General Status of Jeollabuk-do

### Population and Area

- **Population** 1,865,900 (June 2016)
- **Area** 8,066.48km<sup>2</sup>
- **Administrative District** 6 Cities · 8 Districts, 241 Eup-Myeon-Dong (Towns)

## Registered Foreigners of Jeollabuk-do

### By stay status

Total	Alien workers	marriage immigrants	children of the alien residents	koreans with foreign citizenship	international students	others
44,184	11,168	9,303	9,744	1,993	2,737	9,239

### By nationality

Total	China	Vietnam	Philippines	Cambodia	Japan	America	Mongolia	others
44,184	14,594	10,321	3,774	2,765	957	1,064	968	9,741

### By cities

Division	Jeonju	Gunsan	Iksan	Jeongeup	Namwon	Gimje	Wanju
total number	9,496	8,209	7,044	3,849	1,949	2,993	3,447
Division	Jinan	Muju	Jangsu	Imsil	Sunchang	Gochang	Buan
total number	791	584	888	832	849	1,737	1,516

# 02 Support Services for Foreigners



We provide support services for all immigrants starting a new life in Jeollabuk-do to overcome cultural and environmental difficulties through participation in the program and settle as members of our society.

## Main Program

### Early Social Adjustment Training Program for Immigrants

- **Promoter** Korea Immigration Service, Jeonju Division/Center for Integrated Support for Immigrants (☎063-249-8693)
- **Program Target** All immigrants and foreign workers
- **Main Content** Early Social Adjustment (Introduction to the Korean Society, Immigration Control, Guide to the life in Korea)
- **Training Schedule** Institutions and Schedules to be announced on Immigration and Social Integration Network (www.socinet.go.kr)

### Social Integration Program for Immigrants

- **Promoter** Korea Immigration Service, Jeonju Division/Center for Integrated Support for Immigrants (☎063-249-8693)
- **Program Target** All immigrants and foreign workers
- **Main Content** Social Inclusion Training (Korean Language and Korean Culture, Korean Society, etc)
- **Benefits**
  - Exemption to the written test for naturalization and oral test, shorter wait for a citizenship review
  - Points granted when altering to professional work visa (F-2) and F-5 visa
- **Method of Application** Apply at Immigration and Social Integration Network(www.socinet.go.kr)
- Register → Apply for pre-assessment → Print out the proof of application (test identification slip) → Bring along with Alien Registration Card when taking pre-assessment

## Official Organizations for Foreigners

Name of Organization	Contact	Main Content
Jeollabuk-do Center for International Affairs	063-214-5610	Counseling Service for Foreigners, Translating and Interpreting Service, Helpline
Korea Immigration Service (Jeonju Division)	063-249-8693	Early Social Adjustment Training Program, Social Integration Program
Information center for Foreigners	1345	Office for Multi-language Public Service Counter
Multicultural Family Helpline	063-237-1366	Counseling Service, Emergency Support Service, Visiting Counseling Service
Social Integration Network	www.socinet.go.kr	Educational Provision of Information, Education for Social Integration
E-government website for foreigners	www.hikorea.go.kr	Electronic Civil Application for Immigration Office, Provision of Stay Relevant Information
Seon-neomeo multipurpose welfare center	063-232-0334	Korean Language Education, Multicultural Social Education
Jeonju Multicultural Family Support Center	063-243-0333	Korean Language Education, Social Integration Program, Translating and Interpreting Service, Family Counseling, etc.
Gunsan Multicultural Family Support Center	063-443-0053	
Iksan Multicultural Family Support Center	063-841-6040	
Jeongeup Multicultural Family Support Center	063-531-0309	
Namwon Multicultural Family Support Center	063-635-5474	
Gimje Multicultural Family Support Center	063-545-8506	
Wanju Multicultural Family Support Center	063-231-1037	
Jinan Multicultural Family Support Center	063-433-4888	
Muju Multicultural Family Support Center	063-322-1130	
Jangsu Multicultural Family Support Center	063-352-3362	
Imsil Multicultural Family Support Center	063-642-1837	
Sunchang Multicultural Family Support Center	063-652-3844	
Gochang Multicultural Family Support Center	063-561-1366	
Buan Multicultural Family Support Center	063-580-3941	

## Private Organizations for Foreigners

Name of Organization	Location	Contact	Main Function
Jeonju Missionary Counseling Center for Laborers	Jeonju	063-272-2794	Counseling, Medical Service, Education
Asia Labor Center for Human Rights	Jeonju	063-243-0333	Counseling, Medical Service, Education
Jeonbuk Cure of Souls Center for Immigrants	Jeonju	063-285-0041	Labor Counseling and Medical Service
Kind Friends (Cha-kan-but-dul)	Jeonju	063-236-0602	Korean Language Education, Multicultural Social Education
Iksan Home of St. Joseph for Laborers	Iksan	063-852-6949	Counseling, Korean Language Education, Medical Service, Shelter
Gunsan Cultural Center for Foreign Laborers	Gunsan	063-471-0078	Counseling, Meeting
Jeonju Antioch Church	Jeonju	063-274-3228	Counseling, Education, Translation, Medical Service
Osikdo Foreign Support Center	Gunsan	070-4412-0691	Counseling, Education, Translation, Medical Service

# 03 Korean Language and Culture Education, Translation Service

## Korean Language Education Operation

- **Support Target** Marriage based immigrants, immigrated children of multicultural families, foreigners
- **course of study** Step-by-Step
- **Instructional method** – (Group) 2~3 times a week, 1~2 hours per session – (Visiting) Visiting Korean Language Institute 1~2 times per week, 2 hours per session
- **Contact** Multicultural Family Support Center of 14 cities and districts (☎ 1577-5432)

### Private Organizations with Korean Language Programs (current situation)

- (Jeonju) Antioch Church (063-274-3228)
- (Jeonju) Kind Friends (Cha-kan-but-dul) (063-236-0602)
- (Gunsan) Cultural Center for Foreign Laborers (063-471-0078)
- (Iksan) Home of St. Joseph for Laborers (063-852-6949)

## Social Integration Program

- **Support Target** Foreign residents (compatriots, international students, foreign workers, marriage based immigrants, refugees etc.) and naturalized Korean citizens who have not passed three years from the date of acquisition
- **Course of Study** Korean Language and Culture Education, Understanding Korean Society
- **Instructional method** 5 level courses on Korean Language and Korean Culture courses (maximum 415 hours)/Understanding Korean Society (50 hours)
- **Contact** Korea Immigration Service, Jeonju Division (☎063-249-8693)

## Translation Service

- **Service Target** Foreign workers, marriage based immigrants, foreign residents etc
- **Languages Provided** Vietnamese, Chinese, English and 18 more languages
- **Service Criteria** – Initial Entry Counseling for Family and Cultural Differences – Information provision regarding sojourn and translation for visits to public agencies such as hospitals and police stations

Name of Organization	Contact	Main Content
Jeollabuk-do Center for International Affairs	063-214-5610	Counseling and Interpretation/Translation
Information Center for Foreigners	1345	Counseling regarding interpretation/translation and Stay
Center for Interpretation/Translation/Counseling for Foreign Residents	1644-7111	Interpretation/Translation/Legal advice
BBB Free Interpretation/Translation	1588-5644	Interpretation/Translation
Multicultural Family Helpline	063-237-1366	Counseling service including Domestic violence
Foreign Workers Counseling Center	1577-0071	Counseling service for employers and foreign workers
Interpretation Helpline for Tourists	1330	Tourist Information

# 04 Legal Advice and Rescue

You can get a penalty relief when the employer refuses to pay on time or properly for any reasons.

## Disadvantage relief – unpaid wages

- **You can complain to the Department of Labor.**
  - Complain to the Ministry of Employment and Labor center, Labor Support Center(☎1350)
  - You must know the business address and contacts.
- **You can file a complaint in court.**
  - Applications for lawsuit at Korea Legal Aid Corporation (☎132)
- **You can receive unpaid wages with the help of counseling organizations**
  - Make sure to go through the process before three years

- **Processing order**
  - Consultation/case received (district employment center) → parties requested to attend (work supervisor) → investigation → corrective instructions given to the employer regarding the wages → judicial process when employer disobey

## Counseling Guidance at Legal Aid Corporation

- **Contact:** Emergency ☎132

Name of Organization	Address	District	Phone Number
Jeonju	4th Floor, Hankyung Building, 1, Myeongnyun 5-gil, Deokjin-gu, Jeonju-si, Jeollabuk-do, Republic of Korea	Jeonju, Wanju, Imsil	063-251-4034
Jinan	2nd Floor, 66 National Autonomous Center, Jungang-ro, Jinan-eup, Jinan-gun, Jeollabuk-do, Republic of Korea	Jinan	063-432-1345
Muju	97, Jugye-ro, Muju-eup, Muju-gun, Jeollabuk-do, Republic of Korea	Muju	063-323-3254
Gimje	2nd Floor, Gimje Parliament, 40, Jungang-ro, Gimje-si, Jeollabuk-do, Republic of Korea	Gimje	063-542-2028
Gunsan Branch	301, Youngchang Building, 64, Geomdame 1-gil, Gunsan-si, Jeollabuk-do, Republic of Korea	Gunsan	063-452-6696
Iksan Branch	2nd Floor, Youngdong 1-dong Community Center, 34, Gobong 18-gil, Iksan-si, Jeollabuk-do, Republic of Korea	Iksan	063-722-5100
Jeongeup Branch	Jeonju District Prosecutors' Office in Jeongeup Branch Offices, 29, Suseong 6-ro, Jeongeup-si, Jeollabuk-do, Republic of Korea	Jeongeup	063-533-9644
Buan	5th Floor, Buan District Office, 91, Dangsan-ro, Buan-si, Jeollabuk-do, Republic of Korea	Buan	063-584-5080
Gochang	3rd Floor, 239, Jungang-ro, Gochang-eup, Gochang-gun, Jeollabuk-do, Republic of Korea	Gochang	063-564-5280
Namwon Branch	2nd Floor, 110, Dongheon-gil, Namwon-si, Jeollabuk-do, Republic of Korea	Namwon, Sunchang	063-626-5789
Jangsu	Jangsu-gun Health Medical Center, 247, Dangcheon-ro, Dangsu-eup, Jangsu-gun, Jeollabuk-do, Republic of Korea	Jangsoo	063-353-1345

# 05 Use of Medical Institutions

If you join the National Health Insurance, you can use the medical facilities at low cost. We provide minimum medical care for those who are vulnerable to health care and medical use.



## Free medical treatment for foreigners

- **Health examination for marriage based immigrants**
  - **Examination target** Foreign women marriage based immigrant under 40 years old
  - **Examination Criteria** Basic Health Checkup
  - **Procedure** Selection of candidates for screening. (Migrant Women's Support Center branches in eup, myeon, dong) → Examination at medical institutions
- **Contact Information** Jeollabuk-do Health and Medical Department (☎063-280-3252)

### Support for medical services for the underprivileged such as foreign workers

- **Examination target** The homeless, foreign laborers, marriage immigrants and children
- **Support contents** Inpatient treatment and outpatient surgery
- **Supporting organizations** Gunsan Medical Center, Namwon Medical Center, Chonbuk National University Hospital, Jesus Hospital, Wonkwang University Hospital, Buan St Mary's Hospital
- **Contact Information** Jeollabuk-do Health and Safety Division (☎063-280-2430)

## National Health Insurance

### Who should join?

- **Workplace subscription** Workers who are registered as foreigners
- **Local subscription** If you do not qualify for a workplace subscription (only for foreign residents who are staying for 3 months or longer)

### National Health Insurance Corporation's foreigner complaints consultation telephone guide

- **English consultation helpline** 02) 390-2000 / Agent Connection: 1577-1000

# 06 Employment and Labor

We provide expeditious support to actively prevent and resolve difficulties that may arise in relation to employment during the period of domestic employment of foreign workers.

## Key points for employment

### Employment information

Agency	Contact Information	Main Contents
Employment Support Center	jobcenter.work.kr	Operated by the nation, free employment arrangements
Women's Human Resource Development Center	www.vocation.or.kr	Job placement, job training
Jobnet	www.jobnet.go.kr	employment information
Worknet	www.work.go.kr	employment information

※ **Foreign manpower consultation and support :** Foreign Personnel Consultation Center (☎1577-0071), 17 languages

## Social insurance

(Employment Insurance) Employees are given unemployment benefits and paid a certain amount during the period of re-employment.

- **Subject of payment** Non-seey person out of work
- **Application Procedure** Report unemployment to the Ministry of Employment and Labor jurisdiction center
- **Customer Service Center, Ministry of Employment and Labor :** Without an area code ☎1350

Name of Institution	Location	Phone number
Ministry of Employment and Labor, Jeonju administration	251 Gunsan-ro, Jeonju-si, Jeollabuk-do, Republic of Korea	063-240-3400
Ministry of Employment and Labor, Iksan administration	478 Hana-ro, Iksan-si, Jeollabuk-do, Republic of Korea	063-839-0009
Ministry of Employment and Labor, Gunsan administration	44 Jochon 5-gil, Gunsan-si, Jeollabuk-do, Republic of Korea	063-450-0510

(Industrial Accident Compensation Insurance) The state pays compensation for industrial accidents of workers

- **Applicable to** Employee who is injured, ill, disabled or died in work
- **Application Procedure** In case of industrial accidents, apply for industrial accident compensation in the jurisdiction of the Welfare Corporation (☎1588-0075)

Name of Institution	Jurisdiction	Phone Number
Korea Workers' Compensation & Welfare Service, Jeonju administration	Jeonju-si, Namwon-si, Jeongeup-si, Jangsu-gun, Imsil-gun, Wanju-gun, Jinan-gun, Muju-gun	063-240-8160
Korea Workers' Compensation & Welfare Service, Iksan administration	Iksan-si, Gimje-si	063-839-0150
Korea Workers' Compensation & Welfare Service, Gunsan administration	Gunsan-si, Buan-si, Gochang-gun	063-450-0151

### Social insurance counseling phone number and subscription

- **National pension** (1355), compulsory enrollment / health insurance (1577-1000), mandatory enrollment
- **Employment insurance** (1350), partial discretionary accrual / accident insurance (1588-0075), mandatory enrollment

# 07 Foreign Grocery Store Directory



Name of Store	Address	Phone Number
World Food	262-5 Paldal-ro, Wansan-gu, Jeonju-si, Jeollabuk-do, Republic of Korea	063-276-8678
ACE Mart (Asian grocery store)	32-1 2-ga, Paibok-dong, Deokjin-gu, Jeonju-si, Jeollabuk-do, epublic of Korea	010-2610-7140
Asian Supermarket	37 Garinae-ro, Deokjin-gu, Jeonju-si, Jeollabuk-do, Republic of Korea	063-252-5470
Ourshop India	#101 1634-10, 3-ga, Hyoja-dong, Wansan-gu, Jeonju-si, Jeollabuk-do, Republic of Korea	063-224-0106
Asian Supermarket	5-4, Mije 1-gil, Gunsan-si, Jeollabuk-do, Republic of Korea	010-3252-4629
Vietnamese Supermarket	1729-17, Iksandae-ro, Hamyeol-eup, Iksan-si, Jeollabuk-do, Republic of Korea	010-9139-4738
Asian Supermarket	Bokbu Market, 3rd Floor, E, 35-49, Namjung-dong, Iksan-si, Jeollabuk-do, Republic of Korea	010-6293-1460
Philippines store	34 Gumseong-ro, Simpoong-dong, Gimje-si, Jeollabuk-do, Republic of Korea	010-5035-6944
Asian Supermarket	1st Floor, 14, Sambong-ro, Samnye-eup, Wanju-gun, Jeollabuk-do, Republic of Korea	010-4203-0964
Asian Supermarket	222-5, Janggi-ri, Bongdong-eup, Wanju-gun, Jeollabuk-do, Republic of Korea	063-262-5130
Asian Supermarket	50-2, Donghak-ro, Samnye-eup, Wanju-gun, Jeollabuk-do, Republic of Korea	010-5883-1116

# 08 Contact Information

## Governmental Offices and related organizations of Jeollabuk-do

Name of Organization		Phone Number	Main Function
Jeonbuk Provincial Government	Main phone number	063-280-2114	Provincial government guidance
	Complaints Team	063-280-2258	Complaints
Jeollabuk-do Fire Department		063-280-3580	Fire, emergency patients emergency rescue
Jeonbuk Provincial Police Agency		063-280-8114	Operation of Foreign Driver's License Class, Operation of Crime Prevention Class
Employment Management	Counseling Center for Employment and Labor	1350	Employment support
	Korea Migrant Worker Support Center	1644-0644	Support for workers such as support for industrial accidents
	Jeonbuk branch office of Korea Industrial Human Resources Corporation	063-210-9200	Employment support for foreign workers
	Labor Welfare Corporation	1588-0075	Industrial Accident Compensation
National Health Insurance Consultation (Foreigners only)		02-3270-9161	Health insurance subscription
Immigration examination	Ministry of Foreign Affairs and Trade, Consular Call Center	02-3210-0404	Issuing passport, traveling abroad
	Jeonju Immigration Office	063-249-8693	Social integration program, support for adaptation to Korean society

## The emergency phone number

Main function	phone number	Main function	phone number
Report a complaint	Fire / Emergency / Rescue Report 119	Regarding Human Rights	Human rights violation, discrimination report 1331
	Crime Report 112		Helpline for Foreign workers' human rights 1588-1138
	Phone number inquiry 114		Danuri call center 063-237-1366
Living Guide for Foreign Residents	Foreigner's comprehensive guide (Ministry of Justice / Immigration) 1345	Emergency welfare	Health welfare call center 129

## foreign embassy number

Embassy / Consulate	Phone Number	Embassy / Consulate	Phone Number
Nepal	02-3789-9770	Uzbekistan	02-574-6554
Russia	02-318-2116	India	02-798-4257
Mongolia	02-798-3464	Indonesia	02-783-5675
Myanmar	02-790-3814	China	02-738-1038
Bangladesh	02-796-4056	Thailand	02-790-2955
Vietnam	02-738-2318	Pakistan	02-796-8252
Sri Lanka	02-735-2966	Philippines	02-796-7387